

# TRIPE

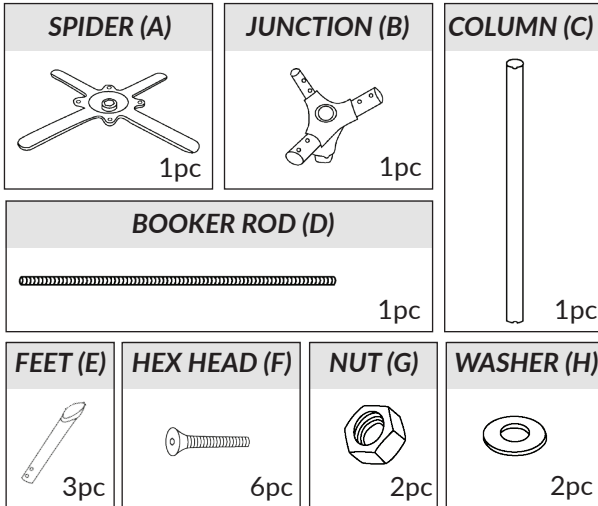
Table & Drybar Bases

**ez** ASSEMBLY INSTRUCTIONS

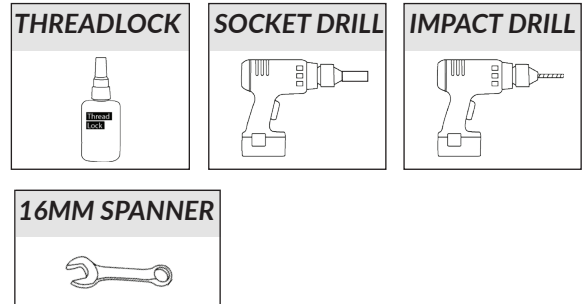


scan me

## PARTS:



## TOOLS (NOT INCLUDED):



We strongly recommend applying thread lock to ends of the booker rod and using an 17mm socket drill. Scan the QR code with a phone or tablet to access the assembly video.

### WARNING:

Always take care with a socket drill.

## INSTRUCTIONS:

